



OFFERS OVER

£145,000

Commercial Road
Strathaven, ML10 6LX

PROPERTY SUMMARY

Forming part of an attractive, well-maintained, blonde sandstone building is this stylishly presented, two-bedroom, ground floor flat with own front and back door and garden. Immaculately maintained by the current owner this lovely period property offers a central location conveniently placed for amenities and beautifully presented, all on the level accommodation finished to a high quality, with oak Herringbone flooring, oak door finishings and skirting boards.

The perfectly formed layout of apartments comprises; reception hallway with substantial walk-in storage cupboard, lounge, dining room, and stunning modern fitted kitchen with integrated appliances, breakfasting bar, Belfast sink, and access to rear garden.

The accommodation continues with two well-proportioned, front facing bedrooms one of which benefits from having fitted storage, and the other with an integrated flat screen TV. The luxury modern, four-piece bathroom has a recently fitted Mira Dual shower system, newly fitted enclosure, and striking feature floor lighting.

2



1



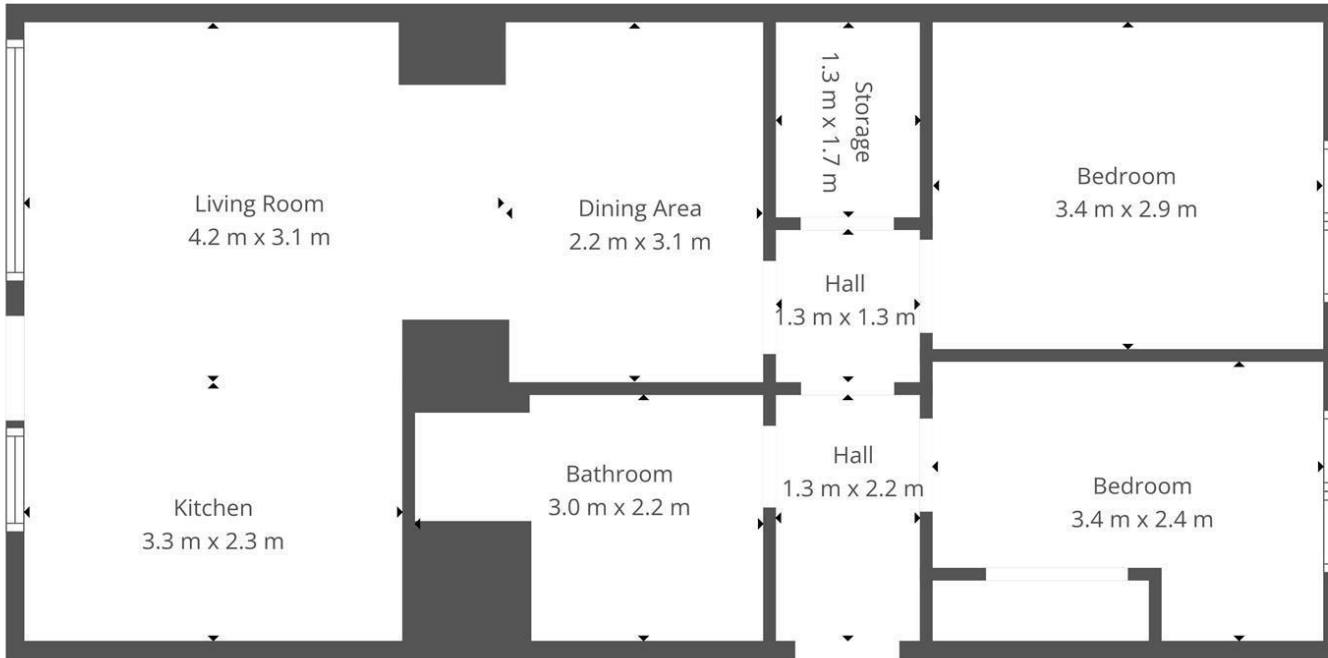
2











LOCAL AUTHORITY

South Lanarkshire

TENURE

Freehold

COUNCIL TAX BAND

B

VIEWINGS

By prior appointment only

Energy Efficiency Rating		
	Current	Potential
<i>Very energy efficient - lower running costs</i>		
(92 plus) A		
(81-91) B		
(69-80) C		75
(55-68) D	62	
(39-54) E		
(21-38) F		
(1-20) G		
<i>Not energy efficient - higher running costs</i>		
Scotland	EU Directive 2002/91/EC	

Agents Note: Whilst every care has been taken to prepare these particulars, they are for guidance purposes only. All measurements are approximate and are for general guidance purposes only and whilst every care has been taken to ensure their accuracy, they should not be relied upon and potential buyers/tenants are advised to recheck the measurements



This Floorplan Is Intended To Give An Indication Of The Layout Only.



OFFICE ADDRESS

9 Townhead Street
Strathaven
ML10 6AB

OFFICE DETAILS

01357 510088
judithmcgill@cruive-estateagents.co.uk